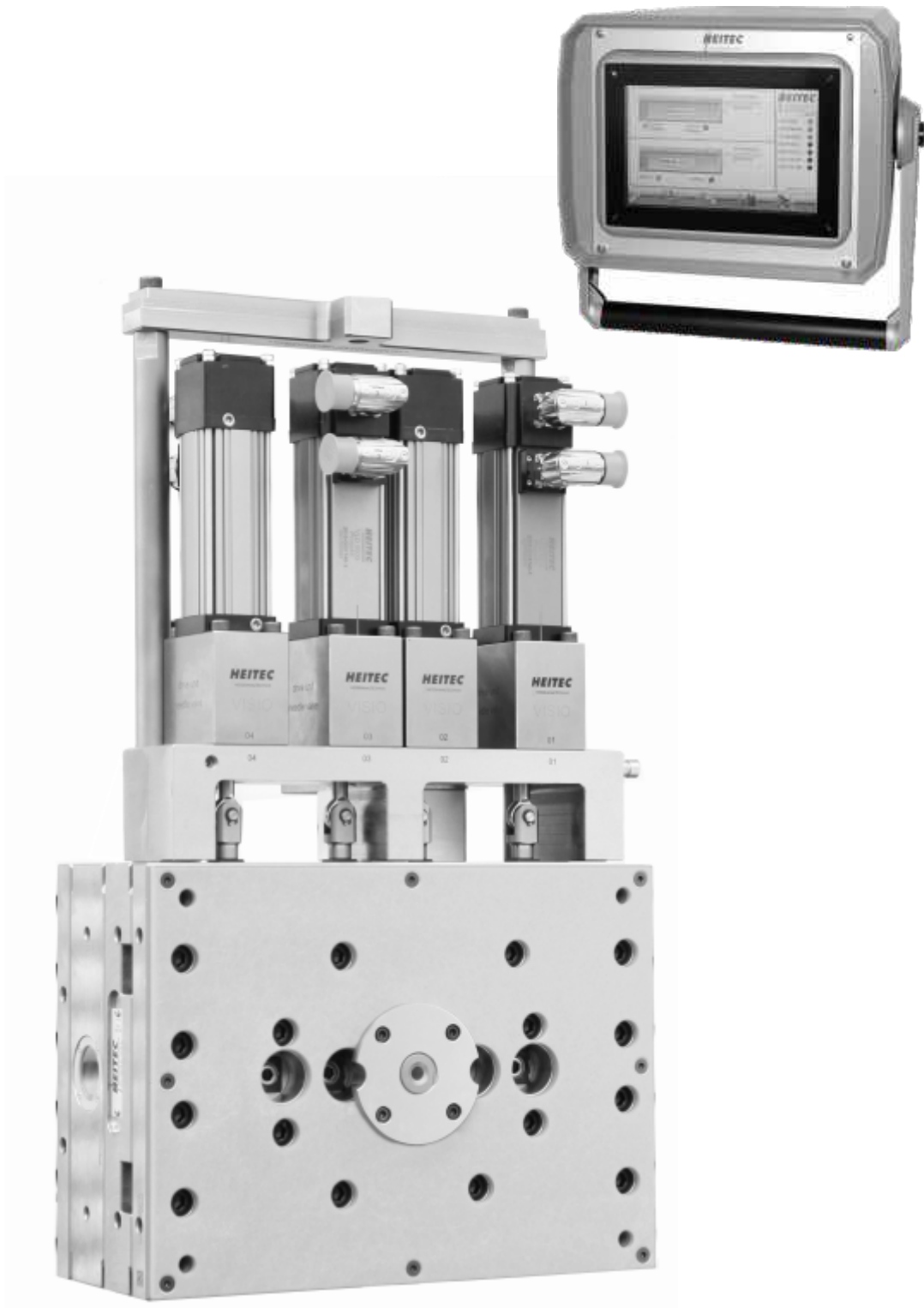


# VISIO DRIVE



EFFIZIENZ +

# VISIO CONTROL

## Type 63.202 / 64.102

### PERFORMANCE DATA OF VALVE GATE DRIVES

#### TECHNICAL SPECIFICATIONS

##### VLD 5000

- maximum driving power: 920W
- maximum driving speed: 210mm/s
- maximum needle shearing force: 8660N
- installation height: 200mm (without pedestal)
- max. actuator stroke 75mm

##### VLD 10000

- maximum driving power: 2000W
- maximum driving speed: 127mm/s
- maximum needle driving force: 8700N
- installation height: 210mm (without pedestal)
- max. actuator stroke 75mm

##### VLD 15000

- maximum driving power: 4200W
- maximum driving speed: 127mm/s
- maximum needle driving force: 35700N
- installation height: 320mm (without pedestal)
- max. actuator stroke 150mm

#### CUSTOMER BENEFITS

- Easier operation / clearly arranged user interface
- Optimised calibration process during startup of the mould
- Special function for operating a side injection valve gate
- Minimizing abrasion of the needle and injection point with a graduated travel profile
- Several drives controllable with only one VDC 2 and with separate input signals
- Suitable for networking allowing remote maintenance and remote diagnosis



Electric Force Transmitter

#### VISIO LINEAR DRIVE - Type 64.102.01

Type	VLD 5000	VLD 10000	VLD 15000
Needle diameter	Needle - number	Needle - number	Needle - number
	max.	max.	max.
Ø 2,5	24	48	60
Ø 3	16	32	48
Ø 4	12	24	36
Ø 6	8	16	24

